

ICG **INDOFINE Chemical Company, Inc.**

121 Stryker Lane, Bldg. 30, Suite 1 • Hillsborough, NJ 08844 • U.S.A.

Phone: (908) 359-6778 • FAX: (908) 359-1179

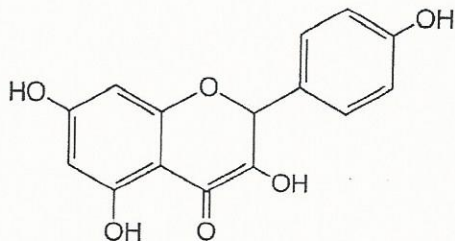
website: www.indofinechemical.com

e-mail: chemical@indofinechemical.com

CERTIFICATE OF ANALYSIS

CAT. No.: K-102

<u>Product Name:</u>	KAEMPFEROL (3, 5,7,4' -Tetrahydroxyflavone)
<u>CAS No.:</u>	[520-18-3]
<u>Lot Number:</u>	0811069
<u>Chemical Family:</u>	Flavonoids
<u>Chemical Formula:</u>	C ₁₅ H ₁₀ O ₆
<u>Molecular Weight:</u>	286.24
<u>Melting Point:</u>	286-287°C
<u>Appearance:</u>	Light Yellow powder
<u>Moisture(KF):</u>	0.8%
<u>Solubility:</u>	Soluble in Methanol
<u>Purity (HPLC):</u>	99.21%





INDOFINE Chemical Company, Inc.

121 Stryker Lane, Bldg. 30, Suite 1 • Hillsborough, NJ 08844 • U.S.A.

Phone: (908) 359-6778 • FAX: (908) 359-1179

website: www.indofinechemical.com

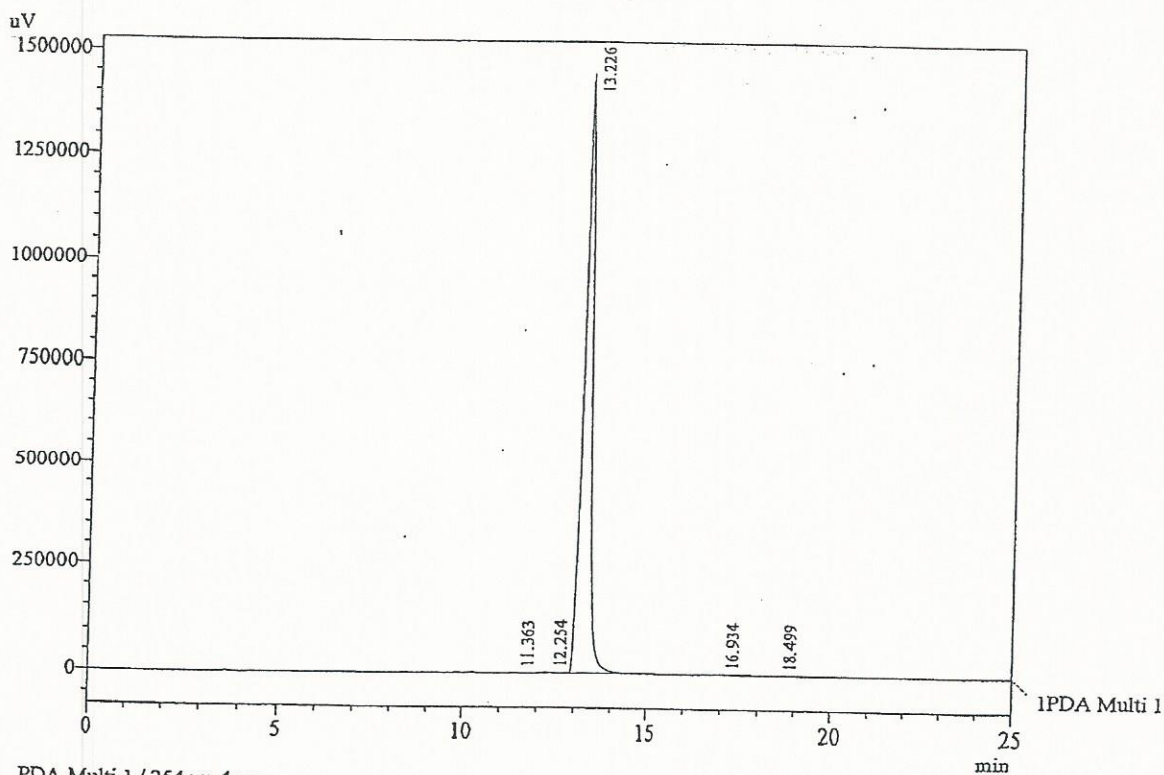
e-mail: chemical@indofinechemical.com

Cat. No.: K-102
Name: Kaempferol
Lot No.: 0811069

Acquired by : Ramana
Sample Name : Kaempferol
Sample ID : Indofine (Lot No.0811069)
Injection Volume : 20 μ L
Data Filename : 051208E.lcd
Method Filename : Linear Gradient.M.lcm

Description:
Column : Inertsil C-18, 250X4.6mm 5.0 μ m
Flow : 1.000mL/min.
Mobile Phase : A(Water 0.05% TFA) : B(ACN)
00.00 : 90 : 10
12.00 : 10 : 90
20.00 : 10 : 90
23.00 : 90 : 10

Chromatogram



1 PDA Multi 1 / 254nm 4nm

PeakTable

PDA Ch1 254nm 4nm

Peak#	Ret. Time	Area	Height	Area %
1	11.363	20181	1624	0.089
2	12.254	60815	3649	0.268
3	13.226	22513818	1445696	99.215
4	16.934	53334	1360	0.235
5	18.499	43713	527	0.193
Total		22691860	1452856	100.000



INDOFINE Chemical Company, Inc.

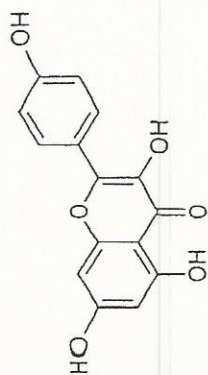
121 Stryker Lane, Bldg. 30, Suite 1 • Hillsborough, NJ 08844 • U.S.A.

Phone: (908) 359-6778 • FAX: (908) 359-1179

website: www.indofinechemical.com

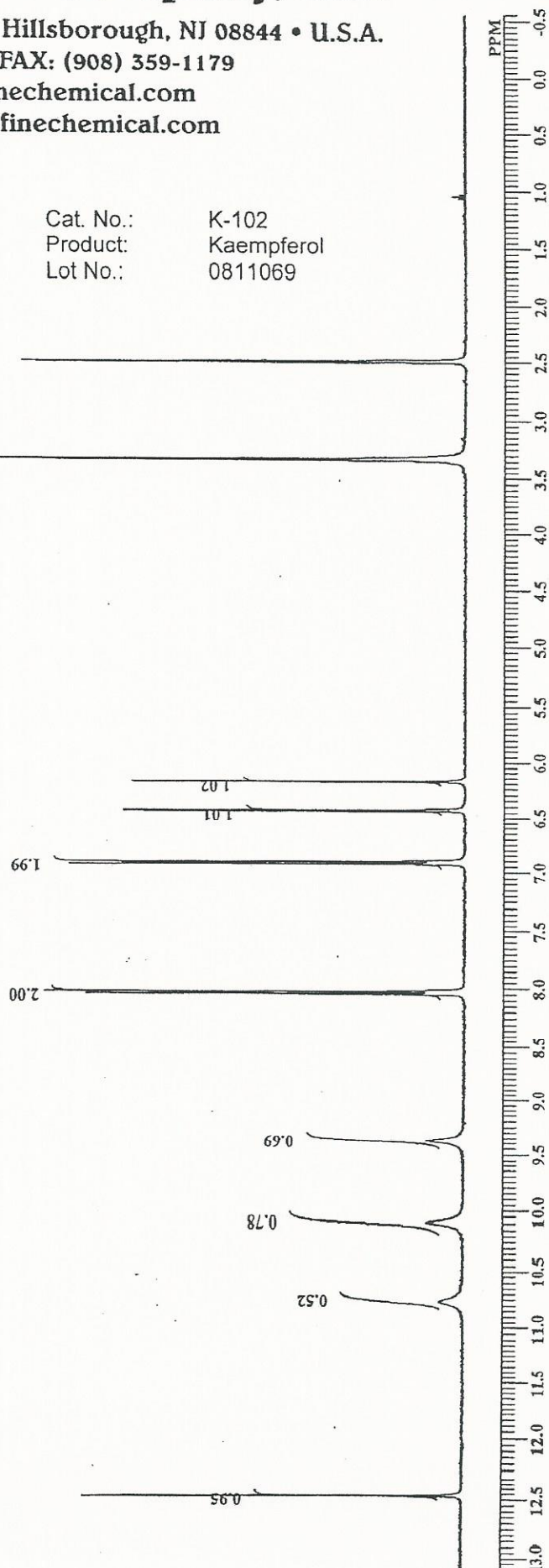
e-mail: chemical@indofinechemical.com

Cat. No.: K-102
Product: Kaempferol
Lot No.: 0811069



Kaempferol

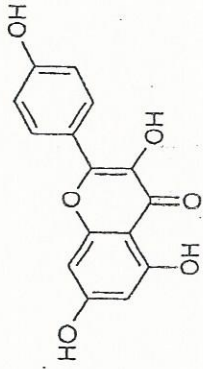
KAM-6 1H NMR DMSO-D6





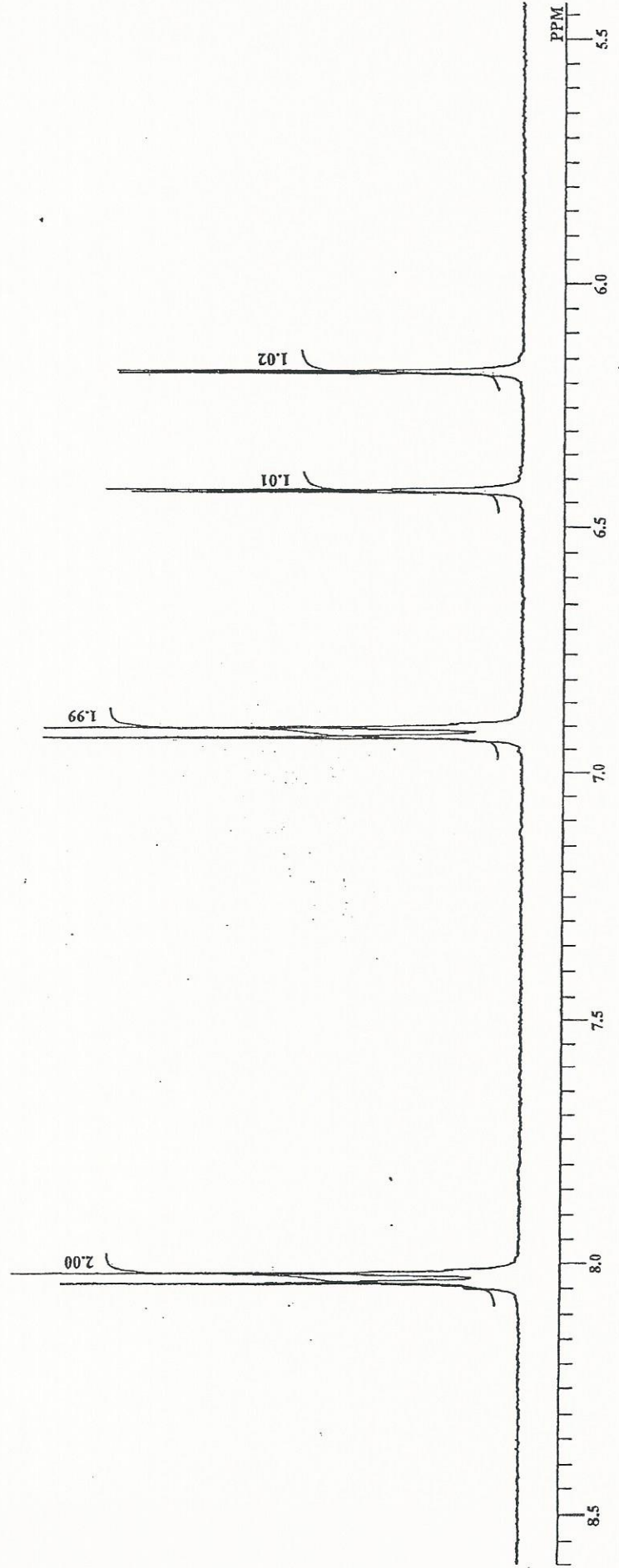
INDOFINE Chemical Company, Inc.
121 STRYKER LANE
BLDG. 30, SUITE 1
HILLSBOROUGH, NJ 08844

Cat. No.: K-102
Product: Kaempferol
Lot No.: 0811069



Kaempferol

KAM-6 1HNMR DMSO-D6



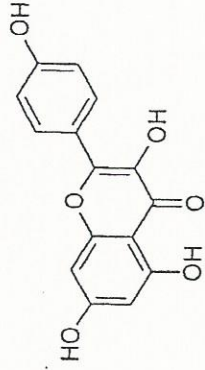


INDOFINE Chemical Company, Inc.
121 STRYKER LANE
BLDG. 30, SUITE 1
HILLSBOROUGH, NJ 08844

Sample Information

Sample Name : KAM-6
Sample ID : -
Data File : KAM-6.lcd
Method File : Test1(ESI).lcm
Acquired by : BSS

Cat. No.: K-102
Product: Kaempferol
Lot No.: 0811069



Kaempferol

MS Spectrum Graph

Probe : ESI
Polarity: Neg

